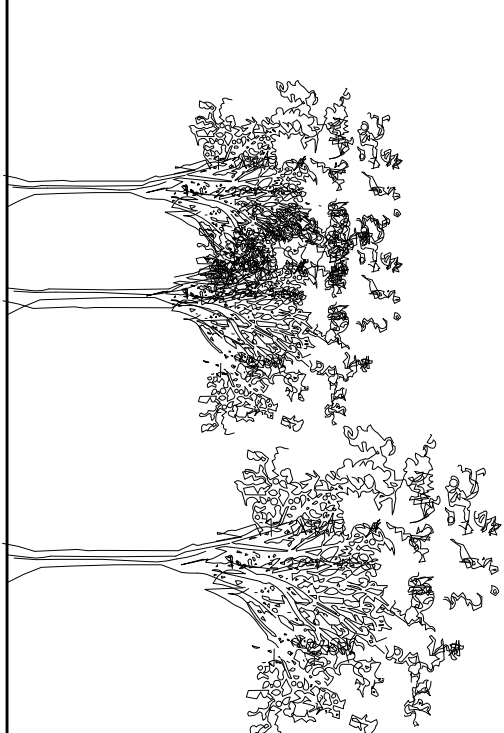
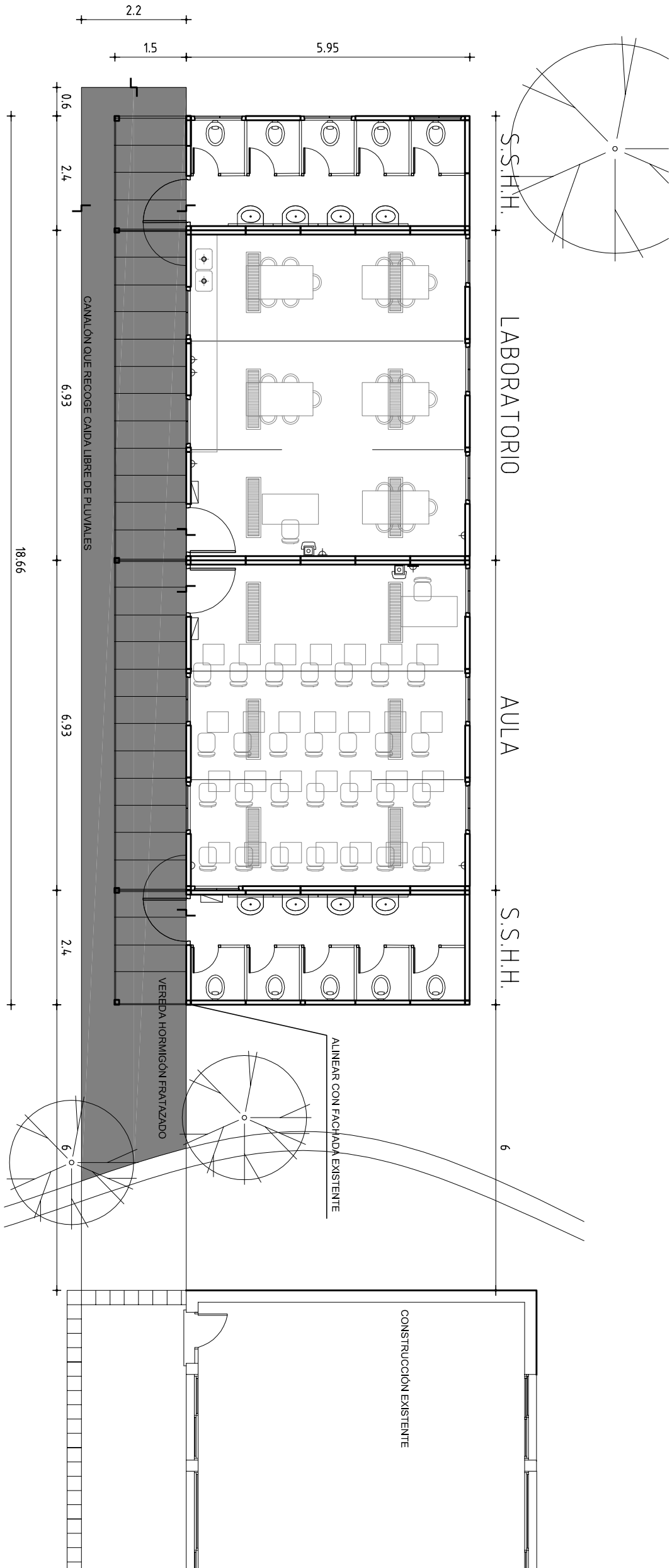
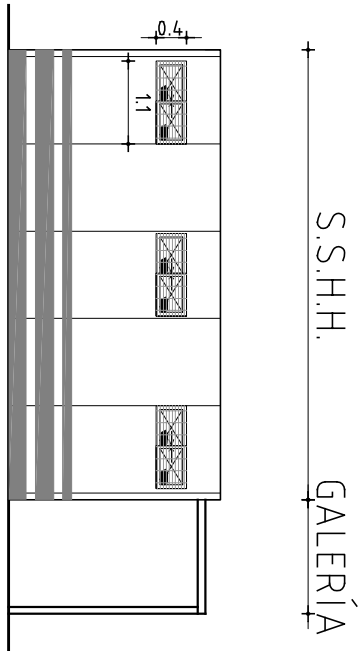
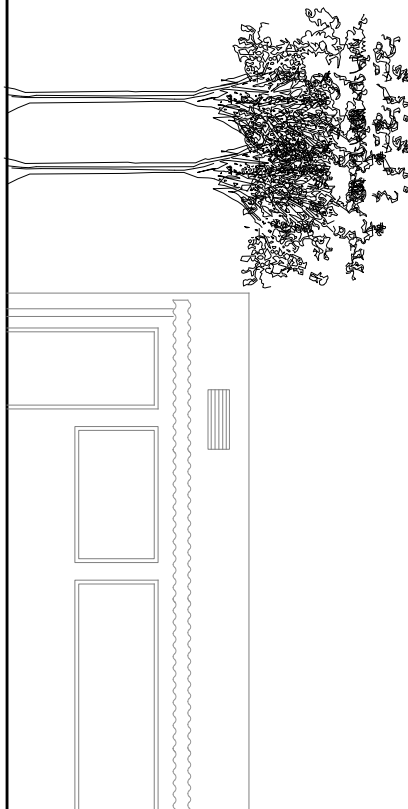
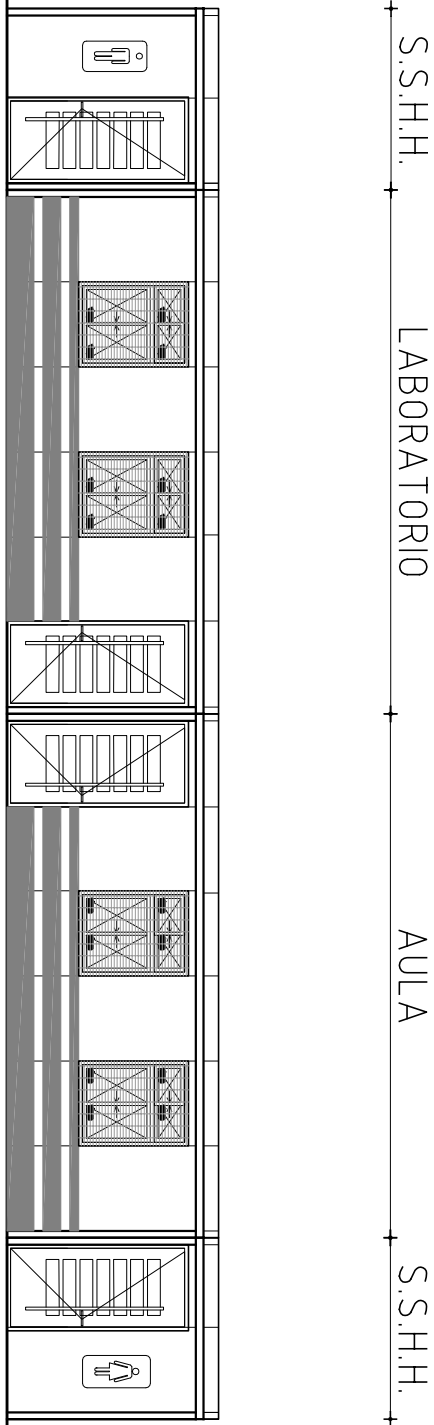


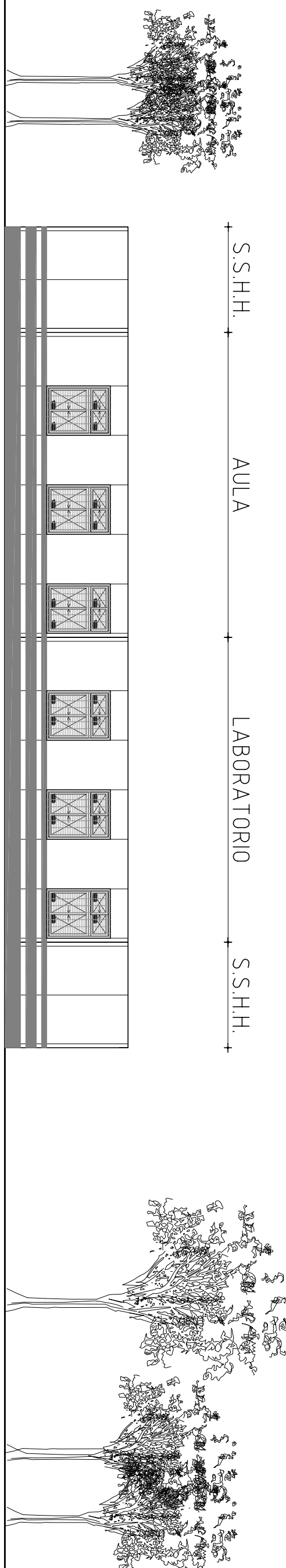
PLANTA  
ESCALA 1/100



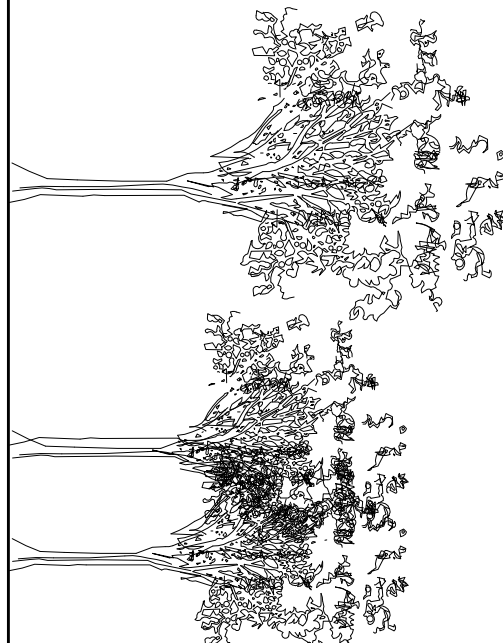
FACHADA OESTE  
ESCALA 1/100



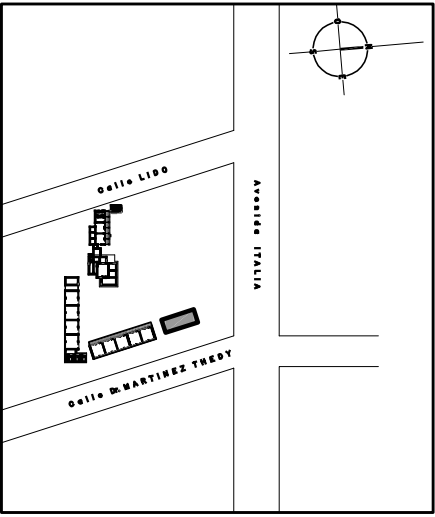
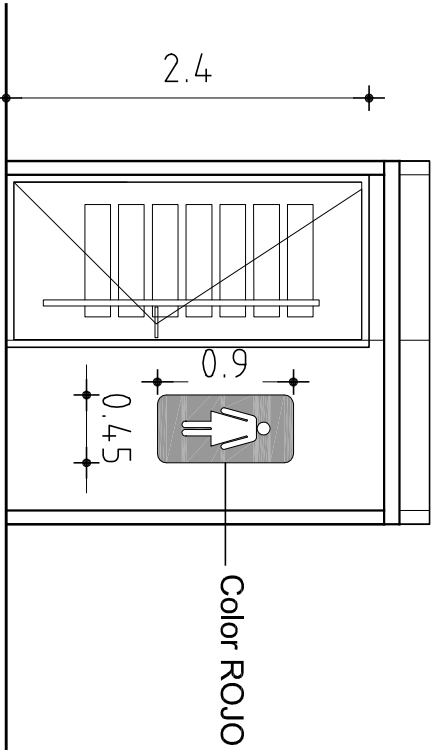
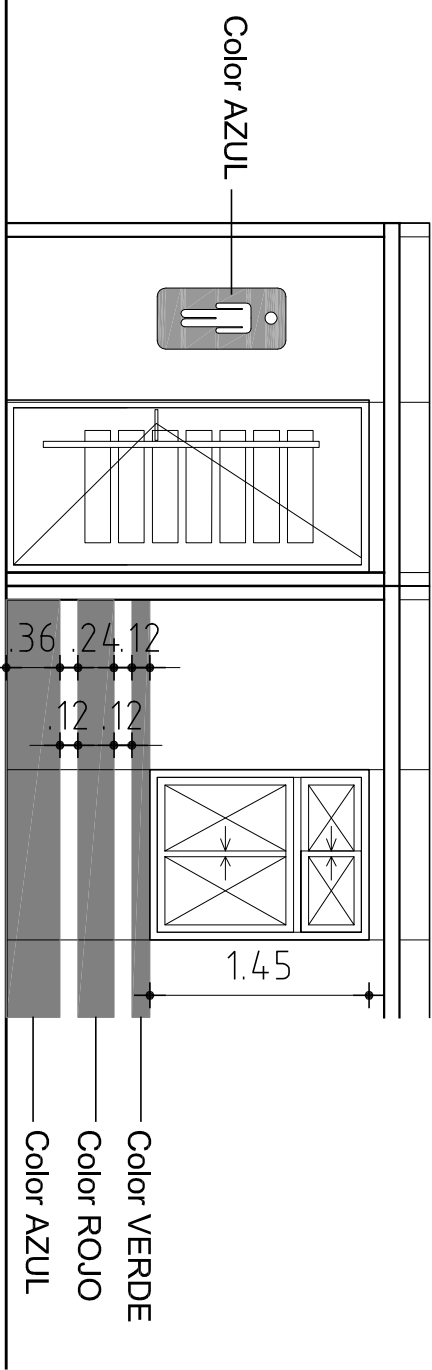
FACHADA NORTE  
ESCALA 1/100




FACHADA ESTE  
ESCALA 1/100



DETALLES FACHADA  
ESCALA 1/50



 <b>ADMINISTRACIÓN NACIONAL DE EDUCACIÓN PÚBLICA</b>		<b>CONSEJO DIRECTIVO CENTRAL</b> DIRECCIÓN SECTORIAL DE INFRAESTRUCTURA	
<b>OBRA</b> <b>ESCUELA Nº175</b> Calle LINDO 1952 esq. Av. Italia		<b>LOCALIDAD:</b> MONTEVIDEO <b>DEPARTAMENTO:</b> MONTEVIDEO	
<b>PLANO DE:</b>		<b>ALBAÑILERÍA</b> PLANTA - FACHADAS	
<b>ARQUITECTO:</b> SANDRA SOTO		<b>FRMA:</b>	
<b>ATTE. de ARQUITO:</b> FLAVIO FLORES		<b>FRMA:</b>	
<b>TÉCNICO:</b>		<b>FRMA:</b>	
		<b>FECHA:</b> 02/2015	
		<b>ESCALA:</b> 1/100-1/50	
		<b>LÁMINA Nº:</b> L 03	
		<b>A2</b>	